

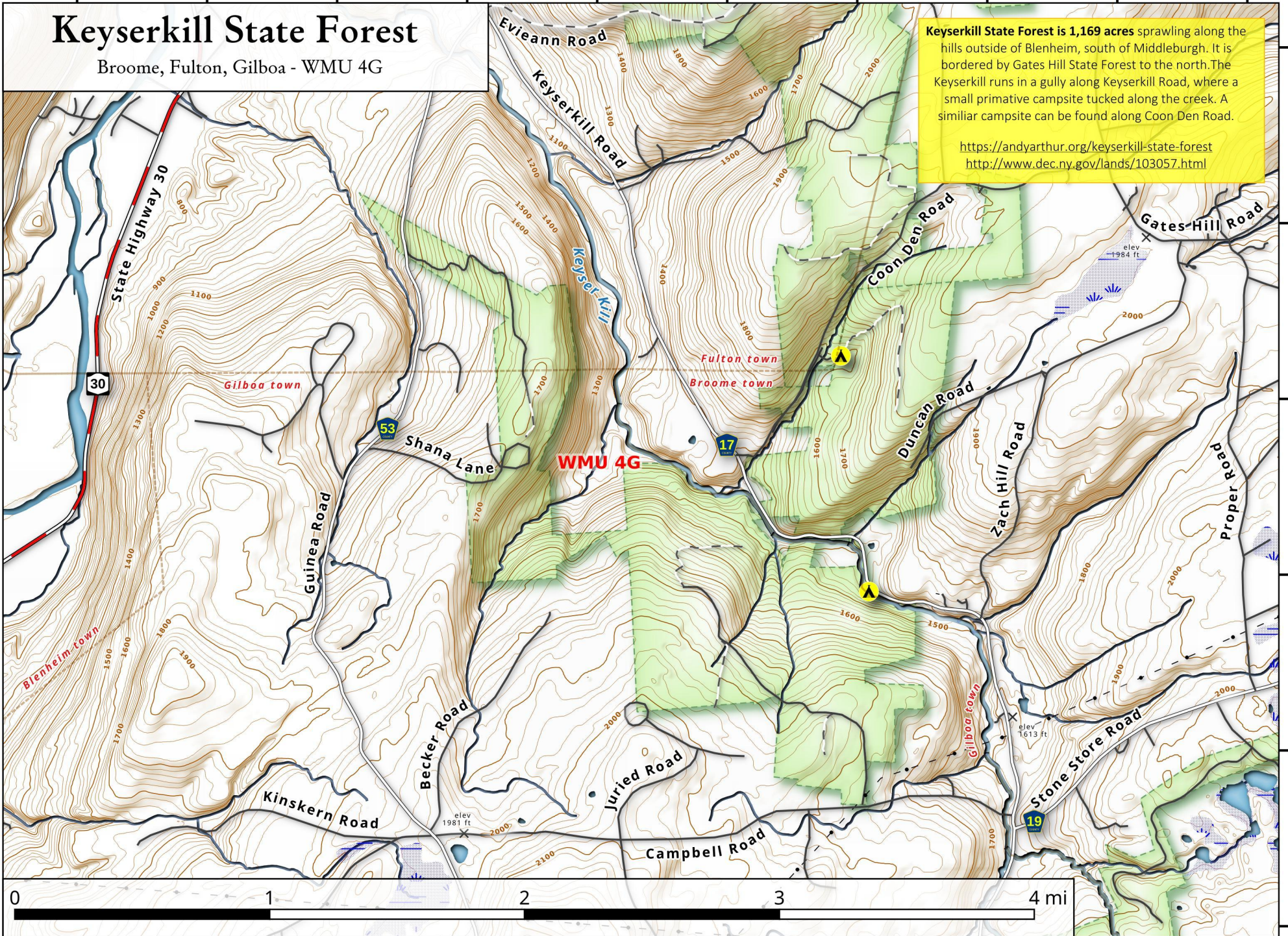
-74.42 -74.41 -74.40 -74.39 -74.38 -74.37 -74.36 -74.35 -74.34 -74.33

Keyserkill State Forest

Broome, Fulton, Gilboa - WMU 4G

Keyserkill State Forest is 1,169 acres sprawling along the hills outside of Blenheim, south of Middleburgh. It is bordered by Gates Hill State Forest to the north. The Keyserkill runs in a gully along Keyserkill Road, where a small primitive campsite tucked along the creek. A similar campsite can be found along Coon Den Road.

<https://andyarthur.org/keyserkill-state-forest>
<http://www.dec.ny.gov/lands/103057.html>



Keyserkill State Forest Map, October 3, 2019 by AndyArthur.org in QGIS 3.8.1-Zanzibar and Python. Street Map is Copyright © OpenStreetMap contributors, CC BY-SA. NYSDEC Data: LiDAR/DEM, Borders, ADK Wetlands, Trails, Assets. True North. 1 inch = 0.5 miles. Projection: NAD83 / UTM zone 18N. Coordinates: 0.01° latitude-longitude (WGS84). Map is centered on 42.4941,-74.373.